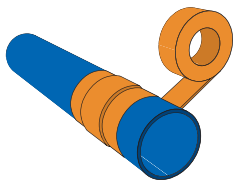
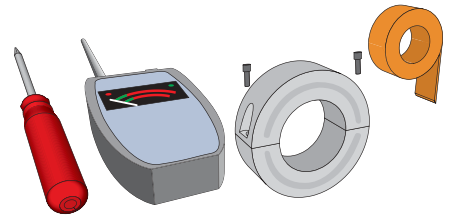


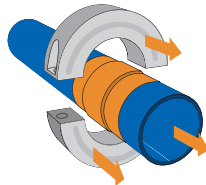
## Installation of Sialex-Systems in industry:

Installation equipment: "security screwdriver / Allen key", Insulating tape, and if necessary "Non conductive packing material" between inner circumference of Ring and outer circumference of pipe. 1. Locate the unit at a minimum distance of 1 meter (100 cm) from any electrical sources (electrical devices). A Sialex approved test probe (Phoenix make use of a handheld Genitron E/M field probe) to measure electrical and magnetic fields around the proposed installation site.

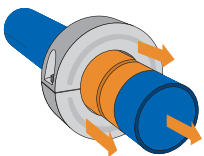
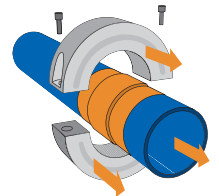


2. Ensure chosen location is dry and free of dust, water, oil and grease. Remove any extraneous materials from installation site (pipe). To prevent a "galvanic reaction" (pipe and Ring material), apply insulating tape around the pipe at the selected location (to extend 5cm in either direction of the Ring location). Use Sialex approved "Non conductive" packing material to ensure no "gap" between inner diameter of Ring and outer diameter of pipe, that Ring is held firmly in place and that the "Ring of pipe" gap is consistent all around the pipe.

3. Position and fasten the two halves of the Ring around the pipe. Ensure that both halves of Ring touch and that inlays and text point in the direction of water flow.



4. Secure both halves of the Ring using screws provided.



5. **IMPORTANT:** ensure that when installed there are no gaps between Ring and pipe and that Ring cannot move or turn around the pipe.

**Hotline**

**+49 (0) 6061/ 96505-62**

Mon – Fri 08.00 – 18.00 hrs

**IMPORTANT:** electrical sources close to the Sialex Ring may affect the Rings performance. Phoenix recommends installing the SialexRing at least **100 cm** from such sources. In the event of discharging (reduction in function) the SialexRing may be "re-charged". Do not install close to strong magnetic fields. Insulate well to ensure no "Galvanic reaction". Do not immerse in water. Install in a dry location.

For optimal results operate in an ambient temperature range of 5-95° C (40-200° F)



>50V/m



keep clear of strong magnetic fields



do not immerse in water



install in dry location



5-95°C  
40-200°F